

# Kindergarten 2022

# Information Booklet



## **Contents**

1. Our School
2. Initialit
3. Mathematics
4. Other Key Learning Areas
5. Food at School
6. Canteen
7. OOSH
8. Best Start
9. Important information for 2021 Kindergarten
  - The first day
  - Pick up/Drop off Procedures
  - When will I know my Child's Class/Teacher
10. How to contact us/Stay informed

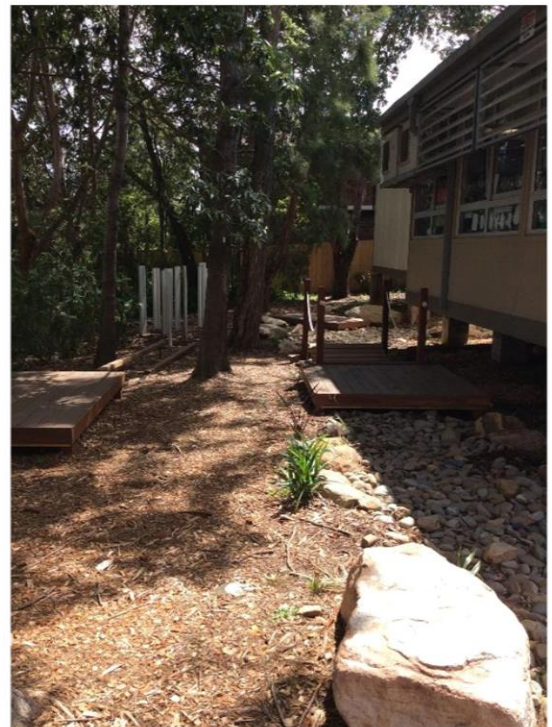


# Oatley Public School

Our School is split over 2 sites, the North Site and the South Site.



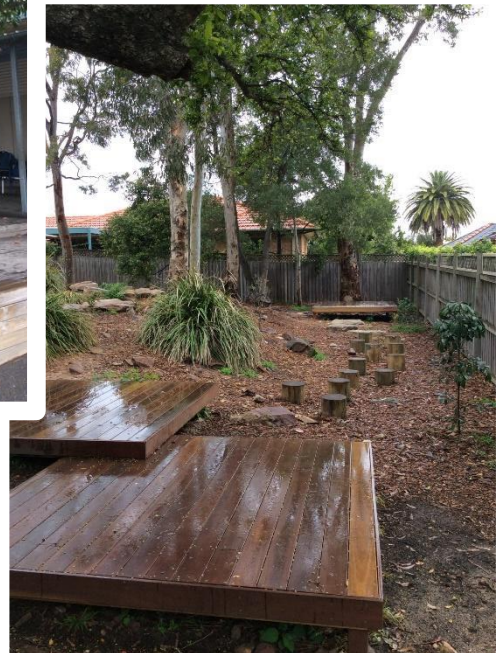
**Our North Site** is where our current Kindergarten, Year 1 and Year 2 classrooms are. There is a toilet block, undercover cola area and a variety of outdoor learning and play spaces for our students to enjoy.





# Oatley Public School

**Our South Site** is where our current Year 3, 4, 5 and 6 classrooms are. In addition, we have our School Administration block, Canteen, Hall, Library, Flats and many other spaces for our students to enjoy- even a Chicken Coup!





## **Our Curriculum**

### **InitialLit**

Here at Oatley Public School our students across Kindergarten, Year 1 and Year 2 engage in Literacy learning through InitialLit. InitialLit is an evidence-based literacy program providing all children with the essential core knowledge and strong foundations to become successful readers and writers. If you would like more information of the InitialLit Program Go to:

<https://multilit.com/programs/initiallit/>



### **Mathematics**

Mathematics content is organised across 3 strands. Number and Algebra, Measurement and Geometry and Statistics and Probability. Students in Kindergarten engage in hands on learning opportunities, building their skills and capabilities across all areas. We focus on developing a foundation of skills and processes, providing opportunities for students to share their thinking in class discussions and small groups, developing their capacity to think critically and solve problems.



## Other Key Learning Areas

Throughout schooling, students will also develop their capacity in the areas of Creative Arts, Science and Technology, Physical development, Health and Physical Education (PDHPE), History and Geography. A range of knowledge and skills from each key learning area are integrated across the curriculum to provide rich and engaging learning experiences. We also explore the Dispositions of Learning to develop skills in Collaboration, Communication, Creativity and Critical reflection. (4C's)





## Food at School

Break Times:

**Lunch-** 11.20am-12.10pm.

Students have 10 minutes of allocated eating time between 11.20 and 11.30, however Kindergarten are provided with additional time to eat until they are able to consume their food within the allocated time frame.

**Fruit Break-** 1.55pm-2.20pm This is time for just a small snack, with a piece of fruit or vegetables recommended.

*Please note we do ask that you are mindful when packing lunches not to include nuts or products containing nuts to help keep our school safe for those with allergies.*



## **Birthday Treats!**

We welcome birthday treats on your child's special day! (Subject to COVID restrictions easing). We do not have knives or plates in the classroom so we do ask that you bring in individual portions that can be handed out easily.




## Canteen

The school canteen is open for lunch on Monday, Tuesday, Wednesday and Thursday.

All lunch ordering is done through the **Flexischools Application**. No paper-based orders are accepted.

The ordering process is as follows:

1. Download the  **flexischools** application and set up your account as per instructions given.
2. All orders must be placed before 9.00am
3. There is a 'Late Lunch' option that closes at 10.00am, but with a limited menu.
4. Students may also bring a small amount of money to purchase a snack or treat at lunch time. A full list of items available was included in your enrolment pack and can be accessed on the School Website.





## What happens if my child attends OOSH?

### **In the morning...**

For students who will be utilising OOSH before and/or After School Care services, children can be dropped off in the morning as per OOSH procedures. When our morning bell goes at 8.50am OOSH carers will bring all students to the relevant playground area.

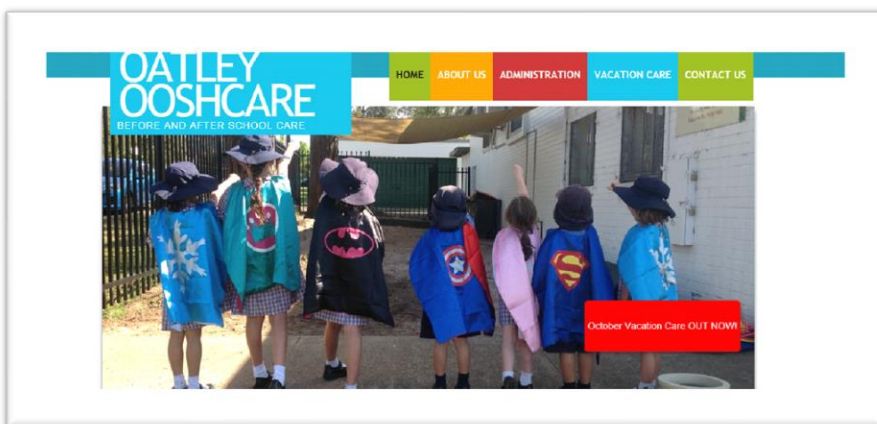
### **In the afternoon...**

OOSH will pick all K-2 students up from the infants' balcony. Teachers will ensure all students make their way to the balcony area. For those accessing off site OOSH services, your child will be accompanied by a staff member to the bus, ensuring they are safely picked up each afternoon.

Please note, if your child is absent from school you will need to notify OOSH as well as the school via the absentee form on School Stream

For more information on OOSH Services please go to:

<http://www.oatleyoosh.org.au/> or  
<http://www.afterschoolcare.org.au/>



## **Best Start**

Best Start is an assessment conducted as students enter into Kindergarten to establish the Literacy and Numeracy skills of each student. This data is used to assist us in determining how to best support your children in their literacy and numeracy learning, with assessment feedback also sent home to parents/carers towards the end of term 1.

In 2022, Best Start Interviews will be conducted on **Tuesday 1<sup>st</sup> February**. Once your child is enrolled, the School Office staff will provide you with a Best Start Interview time. Students are required to attend school on this day just for their half hour allocated time slot. Parents are unable to sit in on the interview with their child, we kindly ask that you wait outside until the assessment is complete. Our staff will ensure your child is happy and comfortable before administering the assessment, as their wellbeing is our priority.

*Please note, we do understand this is a one-off assessment and only a snap shot of your child capability. We often see rapid changes in student learning across Term 1 as students settle in and become more comfortable with the environment and school routines. Student learning will be consistently monitored across the year and responded to through differentiated programming and explicit teaching.*

NSW Department of Education

---

## Best Start Kindergarten Assessment

### **Parent and Carer Information**

The Best Start Kindergarten Assessment helps teachers identify the literacy and numeracy skills of each student when they start Kindergarten.

#### **Assessment**

Your child will answer questions to assess their literacy and numeracy at the beginning of Kindergarten. There is no preparation required for the Best Start Kindergarten Assessment.

#### **Feedback**

You will be provided with feedback about how you can support your child during the first year of school.



#### **Your child**

We know that every child starts school with their own set of experiences, skills and abilities.

#### **Understand and plan**

The information gathered will help teachers to develop effective learning programs that build upon what each child knows and can do when they start Kindergarten.

#### **Best possible start**

The Best Start Kindergarten Assessment will ensure your child receives the best possible start to formal school education.



## **Kindergarten's First Day**

Kindergarten students will attend their first day at Oatley Public School on **Wednesday 2<sup>nd</sup> February, 2022**. We will be running a slightly shortened day, 9.20am- 3.00pm for the first three days, Wednesday 2<sup>nd</sup>, Thursday 3<sup>rd</sup> and Friday 4<sup>th</sup> of February. (If your child is attending OOSH on these days we will be working with cares to ensure they are safely supervised by teachers and OOSH care workers).

From Week 2, starting Monday 7<sup>th</sup> February, students will attend a full day- 9.20-3.20.

Due to COVID restrictions, we have been unable to run our Kindergarten Orientation Program with our 2022 Kindergarten Students. So we will be running this across the first three days of 2022. This will be an opportunity for students to re-establish social connections, become familiar with the environment and get to know all Kindergarten teachers.

## **Dropping Off procedures for the first week- Wednesday 2<sup>nd</sup>- Friday 4<sup>th</sup> February**

Over the first week, we ask that all of our Kindergarten students assemble on our **North Site**.



Subject to COVID restrictions easing, parents may enter the school with their child anytime between 9.00am and 9.20am. There will be teachers on duty at this time if you are unable to stay until the bell goes or if your child is attending OOSH.

Once students arrive we will be welcoming them all into our double Kindergarten room to start the day. This location will be well sign posted and staff will be there to direct yourself and your children to the appropriate place.

## **Pick up procedures for the first week- Wednesday 2<sup>nd</sup>- Friday 4<sup>th</sup> February**

At 3.00pm, we ask that all parents again assemble in the North Site playground. Teachers will dismiss students one at a time to relevant parents/carers. We do ask for your patience with this ensuring all students are returned safely to you is our priority.

At some point over the first week your child will receive a 'Permission to Pick up' form that we ask you complete and return to the teacher as soon as possible. This will provide us with the details of the person/people that will be picking your child up each day, please note that we will not release your child to anyone not listed on this form unless we are notified by the primary caregiver.

Drop off and pick up procedures will change slightly after the first week, further information outlining these changes will be clearly communicated to you on Friday 4<sup>th</sup> February.

### **When will I know my child's Class and Teacher?**

On Friday 4<sup>th</sup> of February, we will finalise the 2022 Kindergarten classes and Teachers. You will receive a letter to notify you of your child's class and their teacher for the year. We appreciate your patience with this as we would like to ensure we take the time to get to know your child and the cohort in order to best set all children up for a successful year.





## **How to Contact us**

If you have any questions or enquiries please contact us via phone or email on:

**Oatley Public School**

Ph: (02) 9580 5519

[oatley-p.school@det.nsw.edu.au](mailto:oatley-p.school@det.nsw.edu.au)

## **Stay Informed**

Keep up to date with everything Kindergarten and key dates and events across the school through:

**School Website:**

<https://oatley-p.schools.nsw.gov.au/>

**School Stream Application**

